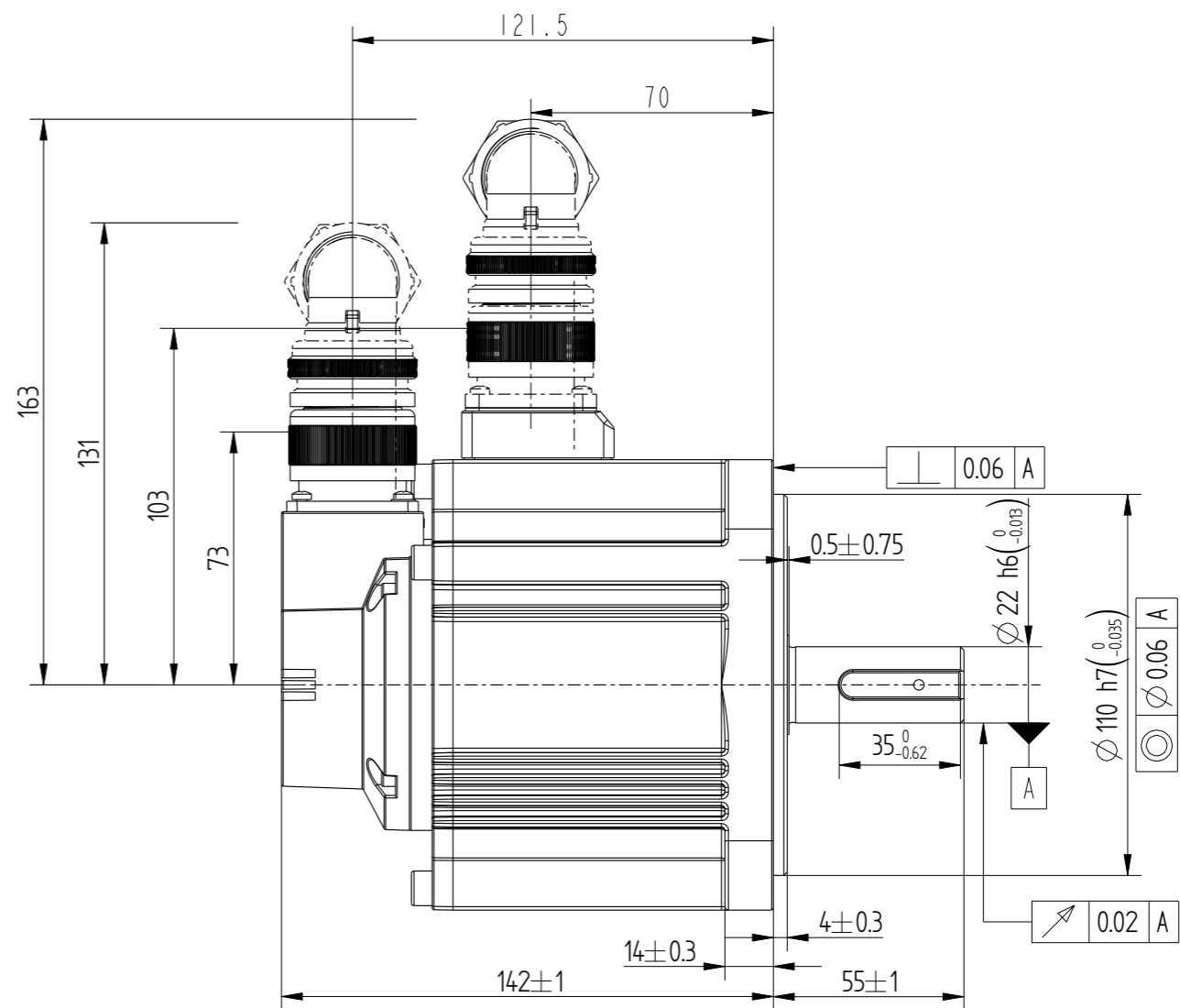
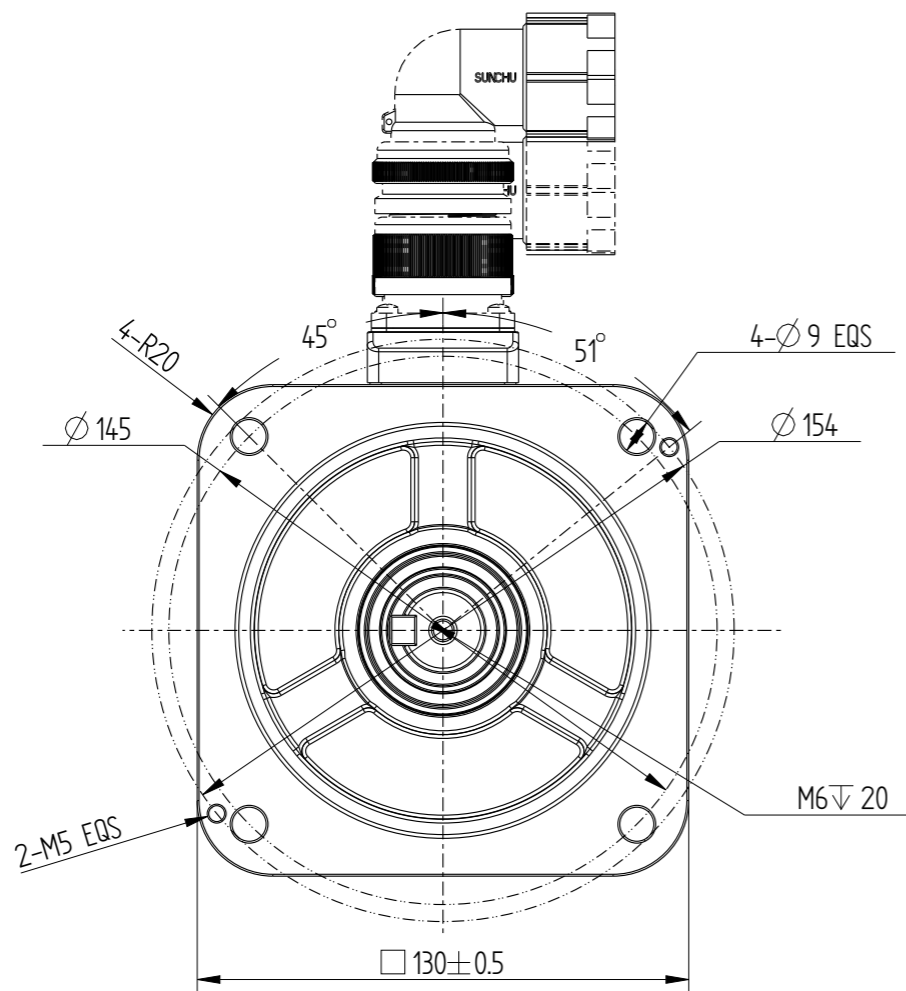
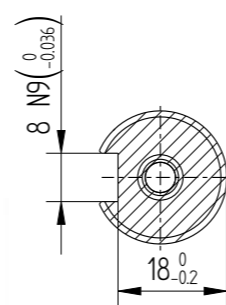
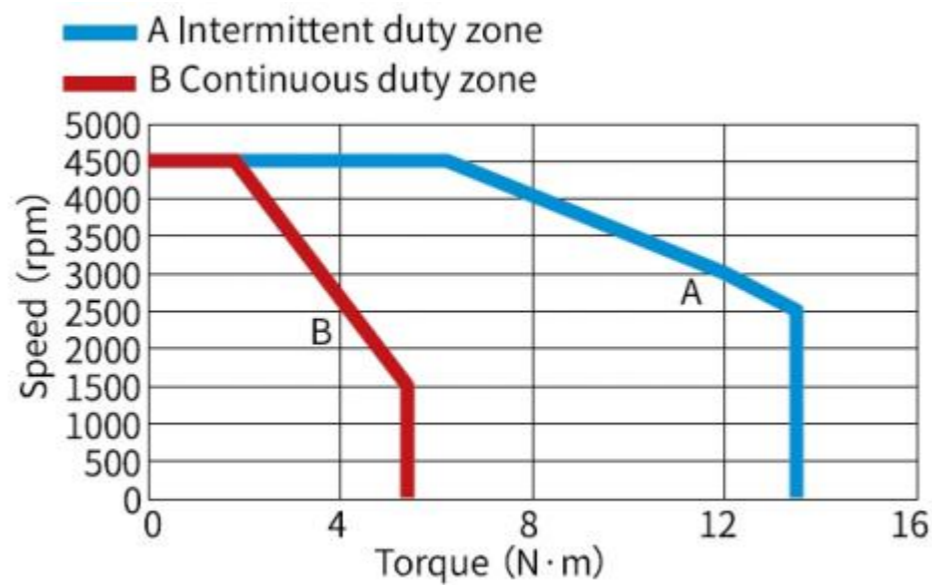


Amendment	Description

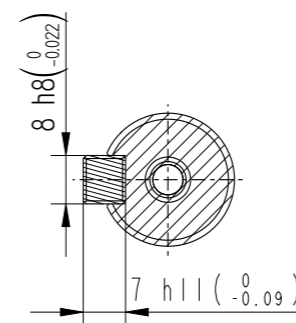
Unit: Millimeter (mm)



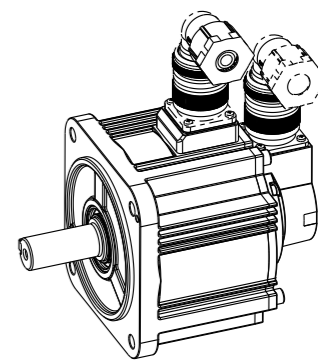
Basic function patmeters	
Rated power kW	0.85
Rated voltage V	220
Rated current A	6.6
Pea current at rated speed A	17.2
Rated torque Nm	5.39
Peak torque at rated speed Nm	13.5
Rated speed rpm	1500
Max speed rpm	4500
Rotor inertia kg·cm	13.56±10%
Encoder resolution	23bit
Insulation class	F(155)
Protection level	IP67
Static torque of brake Nm	\
Brake power supply V	\
Brake backlash°	\
Duty cycle	S1
Radial load N	≤686
Axial load N	≤196

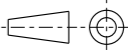


Dimension of shaft end



Dimension of shaft end with key



				Motor Outline Drawing			01117995-WX	
B02	Replace	/	/					
Version	Change method	Changed by	Date					
Design	/							
Check	/			/			Mark 	INOVANCE
Craft	/							
Verify	/						Weight	Scale
standardization	/			5.8kg	1:2	B02	Model	MS1H3-85B15CB-A331R-INT
Approve	/							